

# Pawnee Elementary School WEEKLY PROGRESS REPORT 03/17/2023



**Paint in Area 1**



**East Retaining Wall**

## **This Week: 03/13/23—03/17/23**

- Continue Masonry on Area A
- Begin Ceiling Grid & Lighting in 1st Floor Main Bathrooms
- Complete Casework in Area 2
- Continue Exterior Glass on Area B
- Begin Area A Exterior Glass
- Completed Pour of Main Staircase
- Continue MDP Panel Installation

## **Next Week: 03/20/23—03/24/23**

- Continue Glazing Area A
- Complete Paint in 2nd Floor Classrooms & Bathrooms
- Continue Drywall in Area 4 & Begin Drywall in Kitchen
- Complete MDP Panel Feeds
- Complete Cable Trays & Lighting in First Floor Area 2
- Complete East Retaining Wall
- Begin Storm Drainage Tie-ins

**Weather Days this week: (1) Day**



**Masonry at Front Canopy**



**Ceiling Grid in Area 1**



# **Pawnee Elementary School WEEKLY PROGRESS REPORT**

## **Page 2**



**Existing School Move Out Complete**



**Poured Main Staircase**



**Overhead MEP in Area 2**



**Masonry on Area A**



# Pawnee Elementary School WEEKLY PROGRESS REPORT 03/10/2023



**Main Staircase**



**East Retaining Wall**

## **This Week: 03/06/23—03/10/23**

- Complete Masonry on Area B
- Begin Masonry on Area A
- Continue Exterior Glass on Area B
- Complete Drywall & Paint in 1st Floor Bathrooms
- Continue Lighting in Gym
- Complete Gas Piping & Set Gas Meter
- Pour Main Staircase

## **Next Week: 03/10/23—03/17/23**

- Complete Drywall in 2nd floor bathrooms
- Begin Front Canopy Steel
- Begin Paint in 2nd Floor Bathrooms
- Continue Exterior Glass on Area B
- Complete Paint in Area 1 & 3
- Begin MDP Panel Installation
- Begin Tile Prep in 1st Floor Bathrooms

**Weather Days this week: (2) Days**



**Exterior Clerestory**



**Overhead MEP in Area 2**



# Pawnee Elementary School WEEKLY PROGRESS REPORT

## Page 2



**Outdoor Classroom TPO Complete**



**Framing in Area 2**



**Drywall in Area 2**



**Masonry on Area A**



# Pawnee Elementary School WEEKLY PROGRESS REPORT 03/03/2023



**Clerestory Glazing & Drywall**



**HVAC Rooftop Units**

## **This Week: 02/27/23—03/03/23**

- Continue Overhead MEP in A & B
- Continue Interior Framing in Area A
- Complete Air Barrier in Area A
- Complete Exterior Brick on Area B
- Continue Drywall & Finish in Area B
- Continue Exterior Glass on Area B
- Complete Brick at Outdoor Class
- Complete Paint in Gym
- Complete Casework in Area 1
- Complete Hanging of Basketball Goals

## **Next Week: 03/06/23—03/10/23**

- Continue Overhead MEP in A & B
- Continue Outdoor Classroom Roof
- Begin Brick on Area A
- Begin Ceiling Grid in Area B
- Complete Lights in Gym
- Continue Exterior Glass on Area B
- Continue Interior Paint in Area B

## **Weather Days this week:**

- (1) Days



**Brick at Outdoor Classroom**



**Casework in Area 1**





**Framing & Drywall in Area B**



**Casework in Area 1**



**Glazing at Clerestory**



**Parapet framing at Outdoor Classroom**



# Pawnee Elementary School WEEKLY PROGRESS REPORT 02/24/2023



**Brick at Outdoor Classroom**



**Overhead MEP in Area A**

## **This Week: 02/20/23—02/24/23**

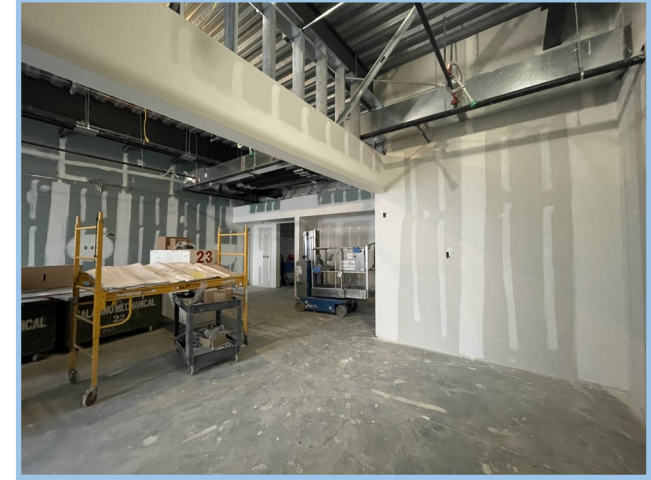
- Continue Overhead MEP in A & B
- Continue Interior Framing in Area A
- Continue Air Barrier Spray & Detail
- Continue Exterior Brick on Area B
- Continue Drywall & Finish in Area B
- Continue Exterior Glass on Area B
- Continue Brick at Outdoor Class
- Continue Painting in Area B & Gym
- Set HVAC Rooftop Units

## **Next Week: 02/27/23—03/03/23**

- Continue Overhead MEP in A & B
- Complete Interior Framing in Area A
- Complete Air Barrier Spray & Detail
- Begin Outdoor Classroom Roof
- Continue Exterior Brick on Area B
- Continue Drywall & Finish in Area B
- Begin Drywall in Area A
- Continue Exterior Glass on Area B
- Continue Interior Paint in Area B

## **Weather Days this week:**

- (2) Days



**Drywall in Area B**



**Exterior Brick on Area B**

# Pawnee Elementary School WEEKLY PROGRESS REPORT

## Page 2



**Soffit framing in Area A**



**Classroom Glazing**



**Framing & Drywall in Clerestory**



**Data Rooms Drywalled**



# Pawnee Elementary School WEEKLY PROGRESS REPORT 02/17/2023



**RR Backer Board Install for Tile**



**Finishing South Glazing**

## **This Week: 02/13/23—02/17/23**

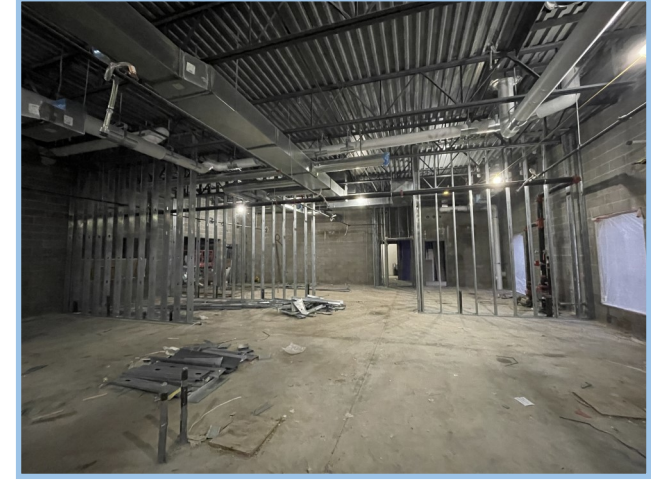
- Continue Overhead MEP in Area B
- Continue Interior Framing in Area A
- Continue Air Barrier Spray & Detail
- Complete Roof Over Cafeteria
- Continue Exterior Brick on Area B
- Continue Drywall & Finish in Area B
- Continue Exterior Glass on Area B
- Begin Brick at Outdoor Classroom
- Begin Painting in Area B

## **Next Week: 02/20/23—02/24/23**

- Continue Overhead MEP in A & B
- Continue Interior Framing in Area A
- Complete Air Barrier Spray & Detail
- Begin Outdoor Classroom Roof
- Continue Exterior Brick on Area B
- Continue Drywall & Finish in Area B
- Continue Exterior Glass on Area B
- Continue Interior Paint in Area B

## **Weather Days this week:**

- (2) Days



**Kitchen Framing**



**Drywall Finishing In Classrooms**

# Pawnee Elementary School WEEKLY PROGRESS REPORT

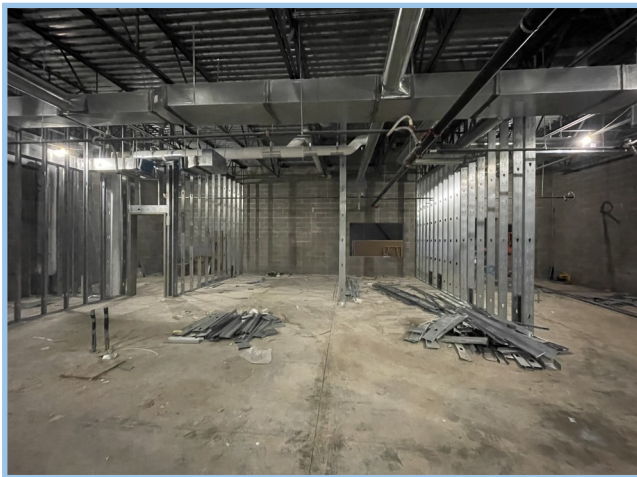
## Page 2



**Classroom Drywall Install**



**First Delivery of Casework**



**Framing for Kitchen Cooler**



**Gym Slab Prep for Wood Floor**



# Pawnee Elementary School WEEKLY PROGRESS REPORT 02/10/2023



**Exterior Glazing**



**Roofing at Cafeteria**

## **This Week: 02/06/23—02/10/23**

- Continue Overhead MEP
- Continue Interior Framing
- Continue Air Barrier Spray & Detail
- Continue Building Roof
- Continue Exterior Masonry
- Continue Drywall & Finishing
- Continue Exterior Glazing
- Upgraded AT&T Pole

## **Next Week: 02/13/23—02/17/23**

- Continue Overhead MEP
- Continue Interior Framing
- Complete Air Barrier Spray & Detail
- Continue Building Roof
- Continue Exterior Masonry
- Continue Drywall & Finishing
- Continue Exterior Glazing
- Begin Interior Paint

## **Weather Days this week:**

- (1) Days



**Drywall Finishing**



**Interior Framing**

# Pawnee Elementary School WEEKLY PROGRESS REPORT

## Page 2



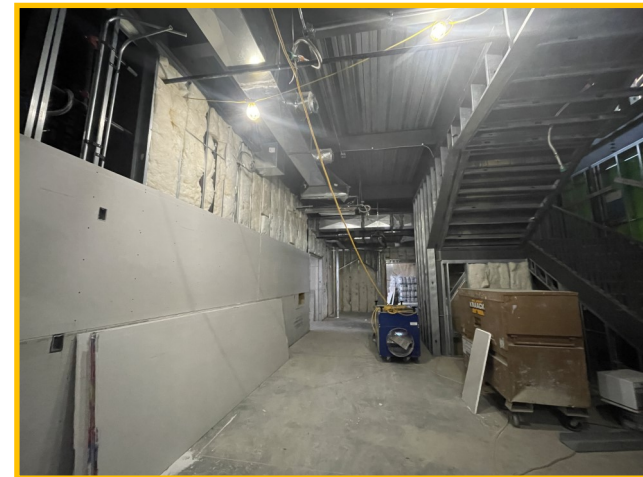
**Main Corridor Drywall**



**East Air Barrier Install**



**Interior Framing**



**Drywall Install**



# Pawnee Elementary School WEEKLY PROGRESS REPORT 02/03/2023



**Drywall Finishing**



**Overhead MEP**

## **This Week: 01/30/23—02/03/23**

- Continue Overhead MEP
- Continue Interior Framing
- Continue Air Barrier Spray & Detail
- Continue Building Roof
- Continue Exterior Masonry
- Continue Drywall & Finishing
- Continue Exterior Glazing
- Pour Transformer Pad

## **Next Week: 02/06/23—02/10/23**

- Continue Overhead MEP
- Continue Interior Framing
- Continue Air Barrier Spray & Detail
- Continue Building Roof
- Continue Exterior Masonry
- Continue Drywall & Finishing
- Continue Exterior Glazing

## **Weather Days this week:**

- (1) Days



**Exterior Glazing**



**Exterior Sheathing**



# Pawnee Elementary School WEEKLY PROGRESS REPORT 01/27/2023



**Brick at Kitchen Parapet**



**Area B Drywall**

## **This Week: 01/23/23—01/27/23**

- Continue Area B In Wall MEP
- Continue Interior Framing
- Complete Exterior Framing
- Continue Exterior Sheathing
- Continue Air Barrier Spray & Detail
- Continue Building Roof
- Continue Exterior Masonry
- Continue Drywall in Area B
- Continue Exterior Glazing

## **Next Week: 01/30/23—02/03/23**

- Complete Exterior Sheathing
- Continue Area B In Wall MEP
- Continue Interior Metal Framing
- Continue Air Barrier Spray & Detail
- Continue Building Roof
- Continue Exterior Masonry
- Continue Drywall in Area B
- Continue Exterior Glazing

## **Weather Days this week:**

- (2) Days



**Interior Framing**



**Glazing Frames**



# Pawnee Elementary School WEEKLY PROGRESS REPORT 01/20/2023



**Steel Lintel for Masonry Set**



**Kitchen Overhead Mechanical**

## **This Week: 01/16/23—01/20/23**

- Continue Area B In Wall MEP
- Continue Interior Framing
- Continue Exterior Framing
- Continue Exterior Sheathing
- Continue Air Barrier Spray & Detail
- Continue Building Roof
- Continue Exterior Masonry
- Continue Drywall in Area B
- Begin Exterior Glazing

## **Next Week: 01/23/23—01/27/23**

- Complete Exterior Sheathing
- Continue Area B In Wall MEP
- Continue Interior Metal Framing
- Continue Air Barrier Spray & Detail
- Continue Building Roof
- Continue Exterior Masonry
- Continue Drywall in Area B
- Continue Exterior Glazing

## **Weather Days this week:**

- (0) Days



**Parapet Blocking**



**Drywall In Classrooms**

# Pawnee Elementary School WEEKLY PROGRESS REPORT 01/13/2023



**Level 2 Restroom Prep**



**Exterior Sheathing**

## **This Week: 01/09/23—01/13/23**

- Continue Area B In Wall MEP
- Continue Interior Framing
- Continue Exterior Framing
- Continue Exterior Sheathing
- Continue Air Barrier Spray & Detail
- Continue Building Roof
- Continue Exterior Masonry
- Continue Drywall in Area B

## **Next Week: 01/16/23—01/20/23**

- Continue Area A Exterior Sheathing
- Continue Area B In Wall MEP
- Continue Interior Metal Framing
- Continue Air Barrier Spray & Detail
- Continue Building Roof
- Continue Exterior Masonry
- Continue Drywall in Area B

## **Weather Days this week:**

- (0) Days



**Area B Roofing**



**Interior Framing**



# Pawnee Elementary School WEEKLY PROGRESS REPORT 01/06/2023



**Area A Parapet Blocking**



**Area B Roofing**

## **This Week: 01/02/23—01/06/23**

- Continue Area B In Wall MEP
- Continue Interior Framing
- Continue Exterior Framing
- Continue Exterior Sheathing
- Continue Air Barrier Spray & Detail
- Continue Building Roof
- Continue Exterior Masonry
- Continue Drywall in Area B

## **Next Week: 01/09/23—01/13/23**

- Continue Area B Exterior Sheathing
- Continue Area B In Wall MEP
- Continue Interior Metal Framing
- Continue Air Barrier Spray & Detail
- Continue Building Roof
- Continue Exterior Masonry
- Continue Drywall in Area B

## **Weather Days this week:**

- (0) Days



**Area B Drywall**



**Remaining Steel Detailing**



# Pawnee Elementary School WEEKLY PROGRESS REPORT 12/30/2022



**Area B Roofing**



**North Elevation Sheathing**

## **This Week: 12/26/22—12/30/22**

- Continue Area B In Wall MEP
- Continue Interior Framing
- Continue Exterior Framing
- Continue Exterior Sheathing
- Continue Air Barrier Spray & Detail
- Continue Building Roofing
- Exterior Masonry Start

## **Next Week: 01/02/23—01/06/23**

- Continue Area B Exterior Sheathing
- Continue Area B In Wall MEP
- Continue Interior Metal Framing
- Continue Air Barrier Spray & Detail
- Continue Building Roofing
- Continue Exterior Masonry

## **Weather Days this week:**

- (1) Days



**Interior Framing**



**Sanitary Tie-In**



# Pawnee Elementary School WEEKLY PROGRESS REPORT 12/16/2022



**Kitchen CMU Walls**



**South Elevation Sheathing**

## **This Week: 12/12/22—12/16/22**

- Continue Steel Detailing
- Continue Area B In Wall MEP
- Continue Interior Framing
- Continue Exterior Framing
- Continue Exterior Sheathing
- Continue Air Barrier Spray & Detail
- Continue Building Roofing
- Prep for Exterior Masonry Start

## **Next Week: 12/19/22—12/23/22**

- Continue Steel Detailing
- Continue Area B Exterior Sheathing
- Continue Area B In Wall MEP
- Continue Interior Metal Framing
- Continue Air Barrier Spray & Detail
- Continue Building Roofing
- Start Exterior Masonry

## **Weather Days this week:**

- (2) Days



**East Stairs Set**



**Area B Roofing**

# Pawnee Elementary School WEEKLY PROGRESS REPORT 12/09/2022



**Gym Roofing Continuing**



**HVAC Curbs Set**

## **This Week: 12/05/22—12/09/22**

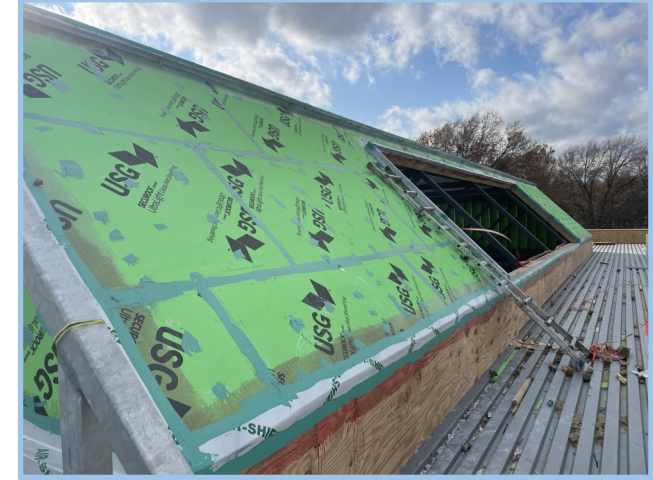
- Continue Steel Detailing
- Continue Area B In Wall MEP
- Complete Kitchen CMU Walls
- Continue Interior Framing
- Continue Exterior Framing
- Continue Exterior Sheathing
- Continue Air Barrier Spray & Detail
- Complete Gym Roofing

## **Next Week: 12/12/22—12/16/22**

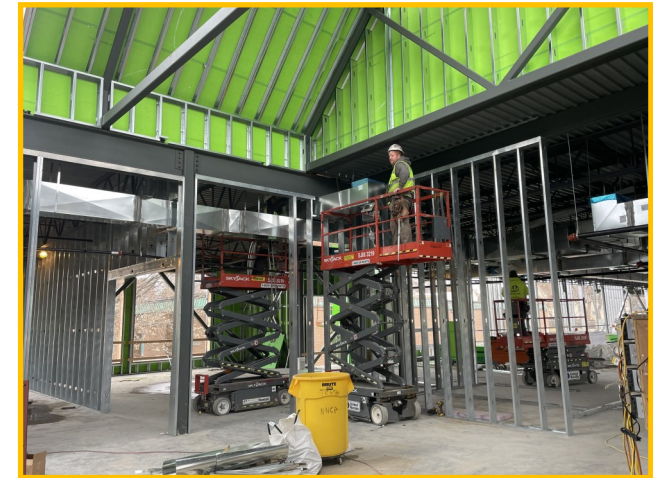
- Continue Steel Detailing
- Continue Area B Exterior Sheathing
- Complete Kitchen CMU Walls
- Continue Area B In Wall MEP
- Continue Interior Metal Framing
- Continue Air Barrier Spray & Detail
- Continue Building Roofing

## **Weather Days this week:**

- (1) Days



**Detailing Prep Before Air Barrier**



**Level 2 Framing**



# Pawnee Elementary School WEEKLY PROGRESS REPORT 12/02/2022



**NNCP Hosted Student Assembly**



**Steel Detailing Prior to Decking**

## **This Week: 11/28/22—12/02/22**

- Continue Steel Detailing
- Continue Area B In Wall MEP
- Continue Kitchen CMU Walls
- Interior Metal Stud Framing
- Continue Exterior Framing
- Continue Area B Exterior Sheathing
- Start Air Barrier Detailing
- Start Gym Roofing

## **Next Week: 12/05/22—12/09/22**

- Continue Steel Detailing
- Continue Area B Exterior Sheathing
- Complete Kitchen CMU Walls
- Continue Area B In Wall MEP
- Continue Interior Metal Framing
- Begin Spraying Air Barrier
- Continue Roofing

## **Weather Days this week:**

- (0) Days



**Detailing Prep Before Air Barrier**



**Clerestory Framing**



# Pawnee Elementary School WEEKLY PROGRESS REPORT 11/18/2022



**Area B Exterior Sheathing**



**Level 2 Area B Overhead & Framing**

## **This Week: 11/14/22—11/18/22**

- Continue Steel Decking & Joists
- Continue Area B In Wall MEP
- Continue Kitchen CMU Walls
- Interior Metal Stud Framing
- Continue Exterior Framing
- Continue Area B Exterior Sheathing
- Set Roof Curbs
- Begin Roofing

## **Next Week: 11/21/22—11/25/22**

- Continue Steel Decking & Joists
- Prep & Pour Final Slab On Deck
- Continue Area B Exterior Sheathing
- Continue Kitchen CMU Walls
- Continue Area B In Wall MEP
- Continue Interior Metal Stud Framing
- Begin Air Barrier
- Continue Roofing

## **Weather Days this week:**

- (0) Days



**Area A Slab on Deck Pour**



**Area A Kitchen CMU Walls**



# Pawnee Elementary School WEEKLY PROGRESS REPORT 11/11/2022



**Area A Interior Stud Framing**



**Area B Exterior Framing & Sheathing**

## **This Week: 11/07/22—11/11/22**

- Slab on Deck Pre & Pour
- Continue Area B OH MEP
- Continue Gym OH MEP
- Continue Kitchen CMU Walls
- Continue Setting Roof Screen Steel
- Interior Metal Stud Framing
- Begin Roof Blocking & Prep
- Roof Decking Install
- Begin Exterior Sheathing

## **Next Week: 11/14/22—11/18/22**

- Continue Area B OH MEP
- Continue Kitchen CMU Walls
- Continue Exterior Sheathing
- Continue Interior Metal Stud Framing
- Install RTU Roof Curbs
- Start Gym Roofing

## **Weather Days this week:**

- (0) Days



**Area A Slab on Deck Pour**



**Area A Kitchen CMU Walls**



# Pawnee Elementary School WEEKLY PROGRESS REPORT 11/04/2022



**Steel A Steel Erection & Detailing**



**Area B Exterior Framing**

## **This Week: 10/31/22—11/04/22**

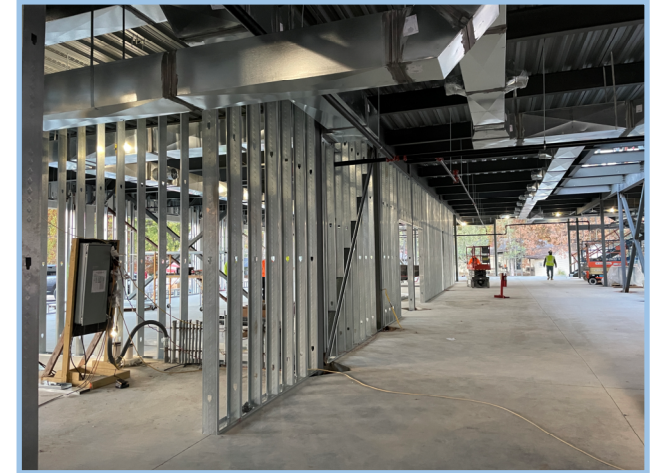
- Continue Steel & Detailing
- Slab on Deck Prep
- Continue Area B OH MEP
- Continue Gym OH MEP
- Continue Gym CMU Walls
- Gym CMU Electrical Rough-In
- Begin Setting Roof Screen Steel
- Set Remaining Gym Precast Panels
- Interior Metal Framing
- Begin Roof Blocking & Prep

## **Next Week: 11/07/22—11/11/22**

- Continue Steel & Detailing
- Slab on Deck Prep & Pour
- Roof Decking Install
- Continue Area B OH MEP
- Continue Gym OH MEP
- Set Roof Curbs

## **Weather Days this week:**

- (0) Days



**Area B Interior Metal Stud Framing**



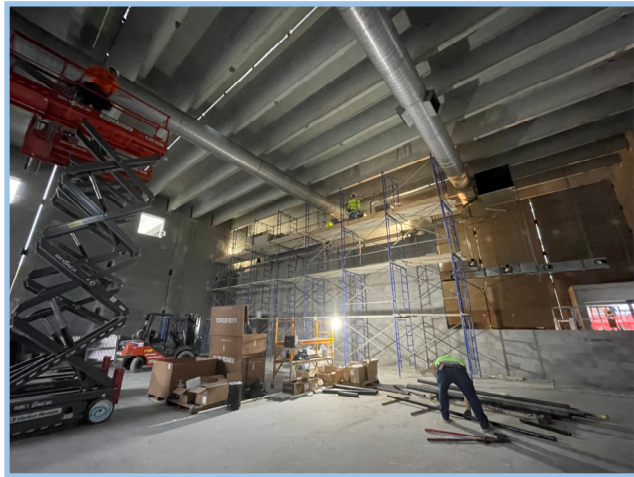
**Area A Kitchen CMU Walls**



# Pawnee Elementary School WEEKLY PROGRESS REPORT 10/28/2022



Steel Erection & Detailing



Gymnasium CMU Erection

## This Week: 10/24/22—10/28/22

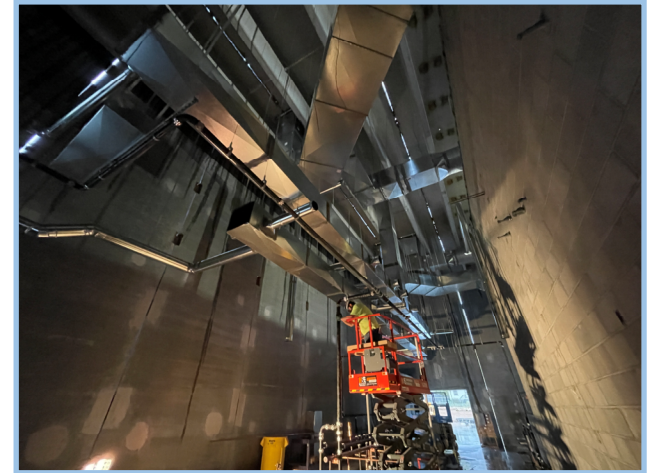
- Continue Steel & Detailing
- Continue Build Up of East Retaining Wall
- Slab on Deck Prep
- Continue Area B OH MEP
- Continue Gym OH MEP
- Continue Gym CMU
- Begin Setting Roof Screen Walls

## Next Week: 10/31/22—11/04/22

- Continue Steel & Detailing
- Slab on Deck Prep & Pour
- Continue Area B OH MEP
- Continue Gym OH MEP
- Continue Gym CMU
- Set Remaining Gym Precast Panels
- Begin Roof Blocking & Prep

## Weather Days this week:

- (1) Days



Gymnasium OH Rough-In



Sequence 2 Decking Install



# Pawnee Elementary School WEEKLY PROGRESS REPORT 10/21/2022



**Steel Erection & Detailing**



**Area A Steel and Precast Connection**

## **This Week: 10/17/22—10/21/22**

- Continue Steel & Detailing
- Build Up of East Retaining Wall
- Continue Exterior Framing
- Slab on Deck Pour
- Continue Area B OH MEP
- Continue Gym OH MEP
- Start Gym CMU

## **Next Week: 10/24/22—10/28/22**

- Continue Steel & Detailing
- Continue Build Up of East Retaining Wall
- Slab on Deck Prep & Pour
- Continue Area B OH MEP
- Continue Gym OH MEP
- Continue Gym CMU

## **Weather Days this week:**

- (0) Days



**Gym Rough-In and CMU Walls**



**East Retaining Wall Build Up**



# Pawnee Elementary School WEEKLY PROGRESS REPORT 10/14/2022



**Area A Steel Erection**



**Area B Slab On Deck**

## **This Week: 10/10/22—10/14/22**

- Continue Steel & Detailing
- Layout For East Retaining Wall
- Continue Prep of Gym Roof
- Continue Layout of Exterior Frame
- Slab on Deck Pour
- Begin Area B OH MEP

## **Next Week: 10/17/22—10/21/22**

- Continue Area A & B Steel Erection
- Continue Steel & Detailing
- Continue Retaining Wall Layout & Foundations
- Slab on Deck Prep & Pour

## **Weather Days this week:**

- (0) Days



**East Retaining Wall**



**Gymnasium Interior Wall Layout**



# Pawnee Elementary School WEEKLY PROGRESS REPORT 10/07/2022



**Area B Steel & Decking**



**Area B Steel & Decking**

## **This Week: 10/03/22—10/07/22**

- Area 6 Gym Slab Pour
- Continue Steel & Detailing
- Layout For East Retaining Wall
- Continue Prep of Gym Roof
- Continue Layout of Exterior Frame
- Slab on Deck Prep

## **Next Week: 10/10/22—10/14/22**

- Continue Area B Steel Erection
- Continue Steel & Detailing
- Continue Retaining Wall Layout & Foundations
- Adjust Phase 2 of Precast Bracing
- Slab on Deck Prep & Pour

## **Weather Days this week:**

- (0) Days



**Gym Slab On Grade**



**Area B Overview**



# Pawnee Elementary School WEEKLY PROGRESS REPORT 09/30/2022



Area B Steel & Decking



Area B Steel & Decking

## This Week: 09/26/22—09/30/22

- Area 6 Gym Slab Prep
- Continue Steel & Detailing
- Layout For East Retaining Wall
- Begin Prep of Gym Roof
- Begin Layout of Exterior Framing

## Next Week: 10/03/22—10/07/22

- Continue Area B Steel Erection
- Continue Steel & Detailing
- Continue Retaining Wall Layout & Foundations
- Adjust Phase 2 of Precast Bracing
- Slab on Deck Prep

## Weather Days this week:

- (0) Days



Prep Gym Roof for Unit Curbs



Retaining Wall Layout & Staking



# Pawnee Elementary School WEEKLY PROGRESS REPORT 09/23/2022



**Area B Steel & Detailing**



**Area B Steel & Detailing**

## **This Week: 09/19/22—09/23/22**

- Continue Area B Steel Erection
- Area 5 Slab Pour
- Area 6 Gym Slab Prep
- Continue Steel Detailing
- Excavation For East Retaining Wall
- Finalize Gym MEP Underground
- Adjust Phase 1 of Precast Bracing

## **Next Week: 09/26/22—09/30/22**

- Area 6 Gym Slab Prep Complete
- Continue Area B Steel Erection
- Continue Steel Detailing
- Continue Excavation For Retaining Walls
- Start Retaining Wall Foundations

## **Weather Days this week:**

- (0) Days



**Area 5 SOG Prep & Pour**



**GYM Underground MEP**



# Pawnee Elementary School WEEKLY PROGRESS REPORT 09/16/2022



**Area B Steel & Detailing**



**Area B Steel & Detailing**

## **This Week: 09/12/22—09/16/22**

- Continue Area B Steel Erection
- Area 5 Slab Prep
- Area 4 Slab Pour
- Begin Steel Detailing
- Layout For Retaining Wall Work
- Finalize Gym MEP Underground

## **Next Week: 09/19/22—09/23/22**

- Area 5 Slab Pour
- Adjust Precast Bracing
- Continue Area B Steel Erection
- Continue Steel Detailing
- Continue Layout For Retaining Walls

## **Weather Days this week:**

- (0) Days



**Area 4 SOG Prep & Pour**



**Underground MEP & Slab Prep**



# Pawnee Elementary School WEEKLY PROGRESS REPORT 09/09/2022



**Finalizing Welding Connections**



**Flying Area B Steel**

## **This Week: 09/05/22—09/09/22**

- Finalize Precast welding Connections
- Begin Receiving Steel Deliveries
- Begin Area B Steel Erection
- Area 5 Slab Prep.
- Area 4 Slab Prep.

## **Next Week: 09/12/22—09/16/22**

- Continue Area B Steel Erection
- Begin Steel Detailing
- Pour Area 5 Slab
- Pour Area 4 Slab

## **Weather Days this week:**

- (0) Days



**First Steel Delivery**



**Setting Area B Steel**



# Pawnee Elementary School WEEKLY PROGRESS REPORT 09/02/2022



**Gym Precast Complete**



**Finalizing Welding Connections**

## **This Week: 08/29/22—09/02/22**

- Continue Underground Rough-In at Pour Areas 4&5
- Finalize Precast welding Connections
- Begin Grouting Base of Walls
- Clean Precast
- Continue Plumbing Underground at Area 5
- Prep For Structural Steel Install

## **Next Week: 09/05/22—09/09/22**

- Electrical Underground at Areas 4&5
- Slab Prep at Areas 4&5
- Begin Plumbing & Electrical Underground at Gym
- Begin Area B Structural Steel Install

## **Weather Days this week:**

- (0) Days



**Cleaning All Precast**



**Pour Area 5 Prep**



# Pawnee Elementary School WEEKLY PROGRESS REPORT 08/26/2022



**Feature Wall & Elevator Core**



**Setting Gymnasium Precast**

## **This Week: 08/22/22—08/26/22**

- Set First CMU Course At Kitchen
- Area A & B Precast Complete
- Spreading Asphalt Millings At Construction Entrance
- Set Gym Precast

## **Next Week: 08/29/22—09/02/22**

- Resume Underground Rough-In at Pour Areas 4 & 5
- Begin Slab Prep at Areas 4 & 5

## **Weather Days this week:**

- (0) Days



**Area B Precast Complete**



**Construction Entrance Asphalt Prep.**



# Pawnee Elementary School WEEKLY PROGRESS REPORT 08/19/2022



**Elevator Core Precast**



**Completed Utility Tie-In**

## **This Week: 08/15/22—08/19/22**

- Begin Precast for Area A
- Complete Underground MEP for Kitchen
- Begin Slab on Grade Prep
- Complete Gravel Access Road
- Begin Kitchen CMU

## **Next Week: 08/22/22—08/26/22**

- Complete Area B Precast
- Start Gym Precast
- Continue SOG Prep

## **Weather Days this week:**

- (1) Days



**Begin Kitchen CMU**



**Feature Wall Precast**



# Pawnee Elementary School WEEKLY PROGRESS REPORT 07/29/2022



Crane Staging Area for Gym Precast



South Side Gravel Laydown

## This Week: 07/25/22—07/29/22

- Continue Underground Plumbing-Pour 4
- Tapped Water Main
- Electrical Conduit Installed on East Side
- Prep Crane Staging for Gym Precast

## Next Week: 08/01/22—08/05/22

- Complete Underground MEP for Pour 5
- Prep Slab on Grade Pour 5
- Complete Gravel Laydown
- Prep Parking Lot for School

## Weather Days this week:

- (2) Days



Kitchen Footings Completed



East Side Backfilled to Grade



# Pawnee Elementary School WEEKLY PROGRESS REPORT 07/22/2022



**East Side Access Road Graded**



**Gym Footings Poured**

## **This Week: 07/18/22—07/22/22**

- Rock Laydown Area / Access Roads
- Prep / Clear Precast Crane Staging Areas
- Complete Utility Install on East Side
- Gym Footings Prepped & Poured
- Complete Grading on South Side

## **Next Week: 07/25/22—07/29/22**

- Begin and Complete Area A Pre-cast Erection
- Continue Underground Plumbing-Pour 4
- Tap Water Main
- Electrical Conduit Installed on East Side

## **Weather Days this week:**

- (0) Days



**Precast Footings Poured**



**Domestic Water Utility Install**



# Pawnee Elementary School WEEKLY PROGRESS REPORT 07/15/2022



**Section 3 Slab on Grade Poured**



**East Storm Sewer Backfilled**

## **This Week: 07/11/22—07/15/22**

- Pour East & South Gym Footings
- Pour Section 3 Slab on Grade
- Complete Remaining South Fill
- Prep Gravel Access Roads & Ramps
- Bring East Side Access to Finish Grade
- Continue Utility Install on East Side

## **Next Week: 07/18/22—07/22/22**

- Rock Laydown Area / Access Roads
- Prep / Clear Precast Crane Staging Areas
- Complete Utility Install on East Side
- Rock East Access Road

## **Weather Days this week:**

- (0) Days



**Continued Footings to Gym Area**



**Section 3 Slab on Grade Poured**



# Pawnee Elementary School WEEKLY PROGRESS REPORT 07/08/2022



**Prep For East Gym Footings**



**Poured Area A Footings**

## **This Week: 07/05/22—07/08/22**

- Pour Area A Footings
- Continue Plumbing and Electrical Underground
- Pour Slab on Grade for Sections 2
- Continue Storm Infrastructure
- Install Water & Fire Lines on East Side
- Install Main Electrical Feeders

## **Next Week: 07/11/22—07/15/22**

- Pour East Gym Footings
- Formwork & Prep for Section 3 Slab on Grade
- Continue Remaining South Fill
- Prep To Rock Laydown Area & Access Roads

## **Weather Days this week:**

- (0) Days



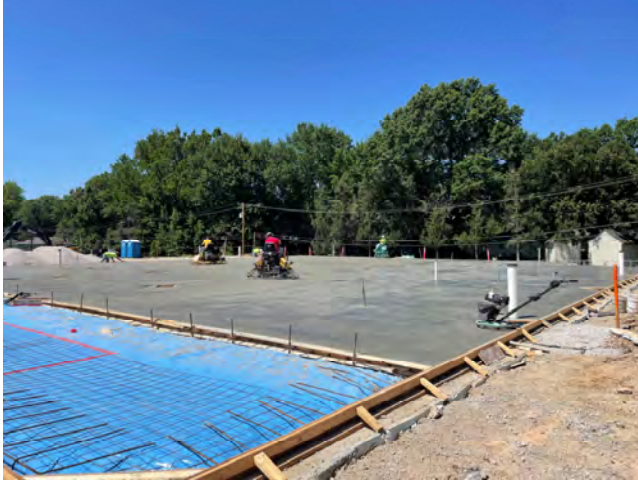
**Continued East Storm Sewer**



**Formwork & Prep for Slab Section 2**



# Pawnee Elementary School WEEKLY PROGRESS REPORT 07/01/2022



Section 1 Slab on Grade



Continuing Storm up West Side

## **This Week: 06/27/22—07/01/22**

- Pour Area A Footings
- Continue Plumbing and Electrical Underground
- Pour Slab on Grade for Sections 1
- Continue Storm Infrastructure
- Continue Grading East Side

## **Next Week: 07/04/22—07/08/22**

- Formwork & Prep for Section 3 Slab on Grade
- Continue Storm Infrastructure
- Prep/Pour Area A Footings
- Install Water & Fire Lines on East Side
- Install Main Electrical Feeders

## **Weather Days this week:**

- (0) Days



East Side Grading for Storm



Formwork & Prep for Section 2



# Pawnee Elementary School WEEKLY PROGRESS REPORT 06/24/2022



**Grading on Northeast Corner**



**Plumbing & Electrical Underground**

## **This Week: 06/20/22—06/24/22**

- Continue Area A Footings
- Continue Grading For Utilities Install
- Slab on Grade Preparation
- Continue Storm Infrastructure
- Continue Plumbing and Electrical Underground

## **Next Week: 06/27/22—07/01/22**

- Pour Area A Footings
- Continue Utilities Install
- Continue Plumbing and Electrical Underground
- Pour Slab on Grade Sections 1&2
- Continue Storm Infrastructure

## **Weather Days this week:**

- (2) Days



**Continued Footing Formwork & Prep**



**Continued Storm Infrastructure**



# Pawnee Elementary School WEEKLY PROGRESS REPORT 06/17/2022



**South Side Fill**



**Plumbing & Electrical Underground**

## **This Week: 06/13/22—06/17/22**

- Continue Area A Footings
- Remaining South Fill
- Continue Slab on Grade Prep
- Continued Grading East Side For Utilities
- Continue Plumbing and Electrical Underground
- Continue Storm Infrastructure

## **Next Week: 06/20/22—06/24/22**

- Continue Area A Footings
- Continue Grading For Utilities Install
- Continue Plumbing and Electrical Underground
- Slab on Grade Preparation
- Continue Storm Infrastructure

## **Weather Days this week:**

- (0) Days



**Continued Footing Formwork & Prep**



**West Entrance Repair On-Going**



# Pawnee Elementary School WEEKLY PROGRESS REPORT 06/03/2022



**Continued Storm Sewer Install**



**Footing Excavation**

## **This Week: 05/31/22—06/03/22**

- Continue Storm Sewer Install
- Continue Foundation Excavation
- Begin Demo Of East Retaining Wall & Playground
- Begin Grading East Side For Utilities
- Plumbing and Electrical Underground

## **Next Week: 06/06/22—06/10/22**

- Continue Grading For Utilities Install
- Continue Plumbing and Electrical Underground
- Slab Pour 1
- Continue Storm Sewer Install

## **Weather Days this week:**

- (2) Days



**Continued Footing Layout and Excavation**



**Connex Delivery—Temp Location**



# Pawnee Elementary School WEEKLY PROGRESS REPORT 05/27/2022



Storm Sewer Install



Prep Water Detention Material

## This Week: 05/23/22—05/27/22

- Begin Cutting East Side For Utilities
- Continue Storm Sewer Install
- Continue Foundation Excavation

## Next Week: 05/31/22—06/03/22

- Electrical Underground
- Slab Pour 1
- Begin Plumbing Underground for Slab Pour 2
- Begin Demo Of East Retaining Wall & Playground
- Continue Grading East Side For Utilities
- Continue Storm Sewer Install

## Weather Days this week:

- (4) Days



Relocated Fencing for Grading & Utility Install



Prep for Spread Footings



# Pawnee Elementary School WEEKLY PROGRESS REPORT 05/20/2022



**Plumbing Underground Sanitary**



**Continued Pouring Footings**

## **This Week: 05/16/22—05/20/22**

- South Storm Sewer Install
- Continued Pouring Footings
- Plumbing Underground
- Construct Precast Mock Up

## **Next Week: 05/23/22—05/27/22**

- Electrical Underground
- Prep For Slab Pour 1
- Demo East Retaining Wall & Play-ground
- Begin Cutting East Side For Utilities
- Continue Storm Sewer Install

## **Weather Days this week:**

- (2) Days



**Prep for Spread Footings**



**Precast Mock Up**



# Pawnee Elementary School WEEKLY PROGRESS REPORT 05/13/2022



**Footing Reinforcement Install**



**Foam Board Install**

## **This Week: 05/09/22—05/13/22**

- Deliver and Prep Storm Structures
- Continue To Prep & Pour Area B Footings
- Install Plumbing Underground
- Temp. Power Complete

## **Next Week: 05/16/22—05/20/22**

- Continue To Prep & Pour Area B Footings
- Install Storm Structures & Detention Basin
- Temp. Roads & Gravel Laydown Phase 2

## **Weather Days this week:**

- (0) Days



**Install Plumbing Underground**



**Pour Area B Footings**



# Pawnee Elementary School WEEKLY PROGRESS REPORT 05/06/2022



**Footing Reinforcement Delivery**



**Laydown Area**

## **This Week: 05/02/22—05/06/22**

- Complete Aggregate Piers
- Deliver and Prep Rebar
- Area B Footings Layout
- Temp. Roads & Gravel Laydown Phase 1

## **Next Week: 05/09/22—05/13/22**

- Deliver and Prep Storm Structures
- Continue Area B Footings
- Install Plumbing Underground
- Temp. Roads & Gravel Laydown Phase 2

## **Weather Days this week:**

- (2) Days



**Footing Layout**



**Completed Aggregate Piers**



# Pawnee Elementary School WEEKLY PROGRESS REPORT 04/29/2022



**Building Pad**



**Laydown Filter Fabric**

## **This Week: 04/25/22—04/29/22**

- Finish up Aggregate Piers
- Complete Rocking Building Pad
- Deliver and Prep Rebar
- Begin Area B Footings

## **Next Week: 05/02/22—05/06/22**

- Deliver and Prep Storm Structures
- Area B Footings
- Prep Laydown & Temp. Roads

## **Weather Days this week:**

- (2) Days



**Raising Grade At Laydown Area**



**Site Overview**



# Pawnee Elementary School WEEKLY PROGRESS REPORT 04/22/2022



Aggregate Piers



Building Pad Prep

## **This Week: 04/18/22—04/22/22**

- Continue Aggregate Piers
- Continue Rocking Building Pad

## **Next Week: 04/25/22—04/29/22**

- Deliver and Prep Rebar
- Deliver and Prep Storm Structures
- Complete Aggregate Piers
- Area B Footings

## **Weather Days this week:**

- (2) Days



Installed Oxblue Camera



Site Overview



## Additional Photos





# Pawnee Elementary School WEEKLY PROGRESS REPORT 04/15/2022



**Mobilized Trailer**



**Building Pad Prep**

## **This Week: 04/11/22—04/15/22**

- Import Material for Building Pad
- Connect Temp. Power
- Mobilize Trailer
- Begin Aggregate Piers
- Site Surveying

## **Next Week: 04/18/22—04/22/22**

- Continue Aggregate Piers
- Deliver and Prep Rebar
- Deliver and Prep Storm Structures

## **Weather Days this week:**

- (2) Days



**Imported Material For Building Pad**



**Site Overview**



# Pawnee Elementary School WEEKLY PROGRESS REPORT 04/08/2022



Ground Breaking Ceremony



Building Pad Prep

## This Week: 04/04/22—04/08/22

- Recompacted Building Pad
- Ground Breaking Ceremony
- Strip Topsoil

## Next Week: 04/11/22—04/15/22

- Import Material for Building Pad
- Connect Temp. Power
- Mobilize Trailer
- Aggregate Piers

## Weather Days this week:

- (2) Days



Compaction of Building Pad



Site Overview



# Pawnee Elementary School WEEKLY PROGRESS REPORT 03/25/2022



**Temp. Pickup Loop**



**Temp. Fencing and Signage**

## **This Week: 03/21/22—03/25/22**

- Temp. Pickup Loop and Striping Install
- Temp. Fence and Signage Install
- Continued Prep For New Building Pad/Site Grading

## **Next Week: 03/28/22—04/01/22**

- Continue Prep For New Building Pad/Site Grading
- Maintain Access Roads
- Mobilize Office Trailer
- Install/Connect Temp. Power
- Grade For Site Access Roads

## **Weather Days this week:**

- (3) Days



**Striping**



**Continue Prep For New Building Pad**



# Pawnee Elementary School WEEKLY PROGRESS REPORT 03/18/2022



**Project Fencing**



**Removed Existing Canopy**

## **This Week: 03/14/22—03/18/22**

- Project Fencing
- Cut-in & Pour Construction Entrance
- Remove Existing Canopy
- Relocate Playground Equipment
- Stripe Rerouted Pickup Lane/ Turnaround
- Prep For New Building Pad

## **Next Week: 03/21/22—03/25/22**

- Continue Prep For New Building Pad/Site Grading
- Mobilize Office Trailer
- Temp. Power
- Temp. Roads and Gravel Laydown
- Ground Breaking Ceremony

## **Weather Days this week:**

- (0) Days



**Erosion Control**



**Prep For New Building Pad**