

SCHOOL MEAL INFORMATION

2022-2023

MENU OFFERINGS

➤ Breakfast

Breakfast entrée choices will be offered each day plus fruit, 100% fruit juice and milk. To make a meal, a student must choose a full portion of at least three items and one item must be a ½ cup of fruit or juice.

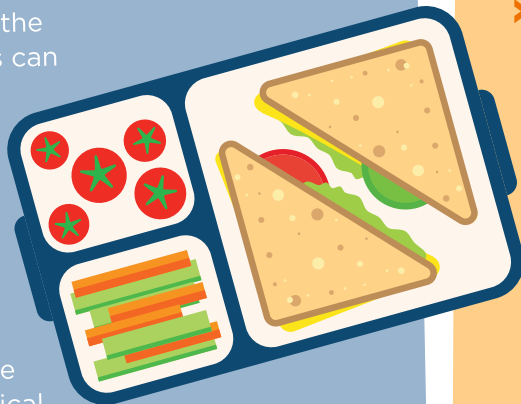
➤ Lunch

A variety of lunch entrees – hot and cold options – will be offered each day for lunch, plus numerous side dishes. To make a meal, a student must choose a full portion of at least three of the five components and at least one component must be a ½ cup of fruit or vegetables.

Students will select a tray with the entrée and then select the side dishes themselves from the choices bar. We encourage students to select only what they will eat to keep food waste and costs down. All menus meet the USDA guidelines for the student's age. Menus can be found on School Café at www.schoolcafe.com/SHAWNEEMISSION.

➤ Special Diet

For allergy or specific dietary concerns, contact the school nurse. A medical form must be completed by a doctor for meal modifications.



MEAL PRICES

It is the expectation that students and staff will have money on their food service account or cash to purchase meals or ala carte items. A meal will be provided to all students regardless of the money they have on their account. Students can use their food service account or cash to purchase items in the cafeteria by entering their student ID number on the PIN pad to make the purchase from their account. The student may receive one breakfast and one lunch daily at the student meal price. Second student meals are not allowed. Current Meal Prices are on the Food Service webpage at www.smsd.org/about/departments/food-service.

➤ A La Carte

In addition to meals, students may purchase additional food & beverages using their food service account. To purchase a la carte, money must be on account or cash in hand.

SCAN HERE



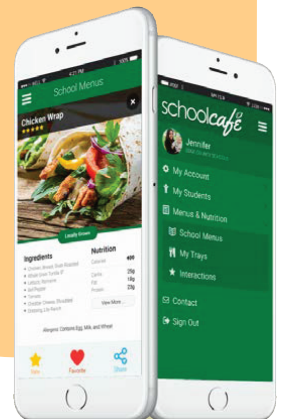
➤ Schoolcafe.com/SHAWNEEMISSION

Parents can create an account to:

- Apply/check status of meal benefit application
- View child's account balance and purchases
- Set limits for a la carte purchases
- Set reminders for low account balances
- View menus with nutrient, ingredient and allergen information



SCAN
HERE



SCHOOL MEAL INFORMATION

2022-2023

➤ Meal Payments and Negative Balances

Payments to student food service accounts can be made by check or cash at the school, credit card online through E-Funds (fee) or by calling the Food Service office with a credit card (no fee).

Households will receive automated phone calls for low account balances when the account falls below \$8.00 for full price and \$2.00 for reduced priced meals.

Account balances (positive or negative) will follow the student each year within the district.

When an account is -\$75.00, Food Service staff will reach out by phone or email alerting the household that without payment the account will be turned over to the collection agency.

On December 1st and again on June 1st, any account that is -\$75.00 or more, a letter will be sent to households requesting payment. If payment is not received within 30 days, the account will be turned over to the district business office and submitted to the district collections agency. Once the account is turned over to collections, the account will reset to \$0.00.



SHAWNEE MISSION
SCHOOL DISTRICT

Food Service Department

6701 West 83rd Street
Overland Park, KS 66204
(913) 993-9710
www.smsd.org

This institution is an equal opportunity provider.

➤ Child Nutrition Meal Benefit Application for Free or Reduced Priced Meals

Households are encouraged to complete a child nutrition meal benefit application to determine if they would qualify for free or reduced priced meals. Determination is based on income guidelines set by the USDA.

Starting July 1, child nutrition meal benefit applications will be accepted online at www.schoolcafe.com/SHAWNEEMISSION.

Processing the application can take up to 10 days. **Families are responsible for any meals charged before the meal benefit application is approved.** Qualifying for meal benefits allows a student to receive one breakfast and one lunch per day as well as other instructional fees may be waived or reduced.

SCAN HERE

